

Lampung Culinary Information System

1st Ochi Marshella Febriani
 Department of Computer Science
 Institute of Informatics and Business Darmajaya
 Bandar Lampung, Indonesia
 ochimarshella@darmajaya.ac.id

3rd Ayu Firdhayanti
 Department of Computer Science
 Institute of Informatics and Business Darmajaya
 Bandar Lampung, Indonesia
 ayufirdha@darmajaya.ac.id

2nd Nursiyanto
 Department of Computer Science
 Institute of Informatics and Business Darmajaya
 Bandar Lampung, Indonesia
 ikinursiyanto@darmajaya.ac.id

4th Deppi Linda
 Department of Economic Business
 Institute of Informatics and Business Darmajaya
 Bandar Lampung, Indonesia
 deppilinda@darmajaya.ac.id

Abstract—Many people in the city of Bandar Lampung have difficulty finding and getting information on culinary specialties of Lampung because there is no special promotion information system for typical Lampung culinary based on culinary categories and how is the process for booking culinary places in the Bandar Lampung City area. Based on these problems, the solution was to build a website-based Hits Culinary Information System to help the community, especially visitors from inside and outside the city of Bandar Lampung, in finding information about the culinary specialties of Lampung in the City of Bandar Lampung. The Hits Culinary Information System in the Bandar Lampung City area provides information and assists several culinary partners in developing their business such as product promotion and assisting visitors in the process of ordering food menus for reservations. The method used to develop the system is the waterfall method with a system developer tool, namely UML with several design stages, namely Use cases, Class Diagrams, Activity Diagrams, Sequential Diagrams. Then the system is built using the PHP programming language and MySQL database. The purpose of the research is to produce information media that can provide information on various kinds of Lampung culinary specialties as a form of introducing the typical food of the Lampung region. As well as expanding promotions from various partners throughout Bandar Lampung. The purpose of the research is to produce information media that can provide information on various kinds of Lampung culinary specialties as a form of introducing the typical food of the Lampung region. As well as expanding promotions from various partners throughout Bandar Lampung.

Keywords—Information System, Culinary, Promotion and Ordering.

I. INTRODUCTION

Local food is an important tourist attraction because it produces an experience for someone who travels, not

only for tourists who have a special interest in food, but also tourists who want to relax trying to enjoy food while traveling.

Culinary is a processed product in the form of dishes in the form of side dishes in daily food, snacks and beverages. Culinary is inseparable from cooking which is closely related to daily food consumption or it can also be typical food from various cities and provinces. The word culinary is an English absorption element, namely Culinary which means related to cooking.

Culinary activities include the preparation, processing, presentation of food and beverage products that make the elements of creativity, aesthetics, tradition, and local wisdom the most important elements in improving the taste and value of products to attract purchasing power and provide experiences for consumers.

Bandar Lampung is one of the cities that has many culinary destinations scattered in various areas of Bandar Lampung City, this culinary itself consists of various types of food, such as heavy, medium and snack foods. For Bandar Lampung as a buffer city for the capital, culinary developments are believed to be able to increase the number of tourists and the image of Bandar Lampung City as a tourist destination. With the potential and opportunities for culinary tourism that is owned by the City of Bandar Lampung.

The existence of a typical Lampung culinary system becomes a media for promotion and ordering as a form of increasing Lampung culinary tourism through the website. With this system, it can improve the economic and social side of culinary tourism. typical of Lampung. This system was created because there are still many visitors who come from outside and inside the city of Bandar Lampung who do not know what the typical culinary of Lampung is, there is no typical culinary information system of Lampung that provides culinary information, locations, ordering culinary products for the city of Bandar Lampung.

This paper is structured as follows; The first part provides a little background information about the problems of the Lampung culinary information system, in the second part, we explore some related research, followed by the scheme that we propose in this project. In addition, we discuss the results of this study in section four and conclude in section five.

partly from the IIB Darmajaya library.

II. RELATED WORK

To produce a typical Lampung culinary information system that is useful and has a positive impact on all parties, the data collection process is carried out beforehand with the aim of knowing user needs and maximizing the tasks of system developers. so as to obtain the information needed in order to achieve the research objectives. Methods of collecting data in this study using several methods, namely:

1. Observation

In the observation method, researchers must make direct observations of culinary tourism in Bandar Lampung City, with the aim of knowing various kinds of menus and culinary selling prices sold in the culinary tour. Observations were carried out randomly by visiting 7 culinary tours that were considered to be typical of Lampung in Bandar Lampung City, the determination of Lampung's culinary tourism spots was seen from the ranking of search data on google as a research sample, which consisted of culinary tours of Faw's Pindang, Pindang Nuwo, WR Makan Pindang Chief Simba Restu Murni, Dapoer Mbok Rondo, Sambal Seruit Buk Lin. WR Pindang Uwo, and WR Pindang Ika.

2. Interview

After conducting the observation method, the writer then conducted the interview method, where this method was carried out by means of discussion and question and answer with sources of information. In this study, interviews were conducted with each owner of a culinary business in Bandar Lampung City. Interviews were conducted randomly. The first interview was conducted with Mas Rasha as the manager of the Faw's Pindang culinary tour, the second interview was conducted with Mr. Yadi as an employee of Pindang Nuwo, the third interview was conducted with Mrs. Riska Febri as the manager of the culinary tour WR Makan Head of Simba Restu Murni, the fourth interview was conducted with Mas Ilham as an employee of the Dapoer Mbok Rondo culinary tour, and the fifth interview was conducted with Mrs. Linda as the owner of the Sambal Seruit Buk Lin culinary tour.

3. Literature (Library)

The literature study is meant by studying various references, either articles or journals, to obtain sources of information. Not only journals, this information search is also sourced from the internet. The source the author got

Then then determine the next development, in this case. To facilitate the development of a typical Lampung culinary information system, the method used is the Waterfall method based on a brief history that software development is widely used for faster development by covering the stages of planning, analysis, design and implementation. The following is the concept of the Waterfall method [12]. which can be seen in Figure 2.1 waterfall method.

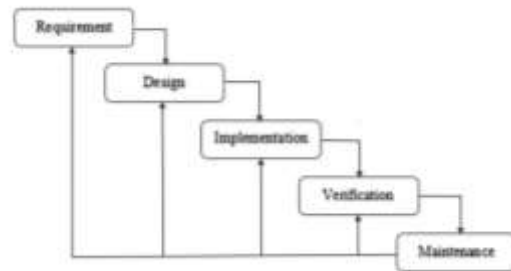


Figure 1. Waterfall Method (pressman, 2012)

III. PROPOSED SCHEME

Here the Extreme programming concept has stages of planning, design, coding and testing.

3.1 Planning

Planning is the beginning of techniques to obtain user requirements specifications, review literature and find problems to carry out analysis and documentation of user stories. It is very important for developers to communicate regularly with company owners.

3.2 Analysis

System analysis and design, modeling software requirements that must be adapted to the requirements requested from UML such as Use Case Diagrams, Activity Diagrams, Sequence Diagrams and Class Diagrams.

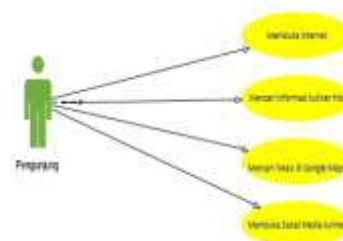


Figure 2. Use case of Current System Analysis

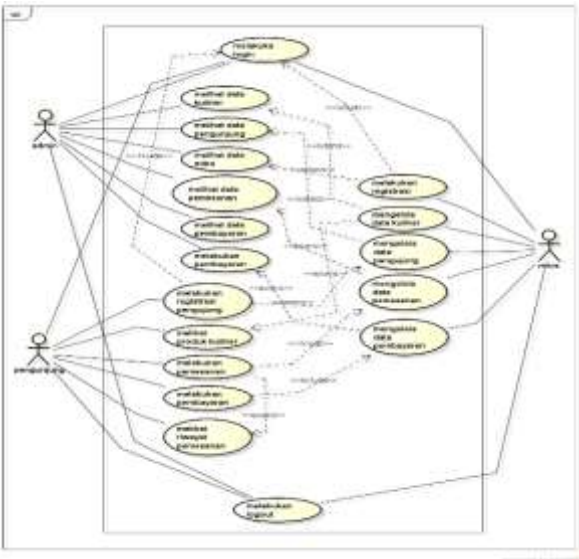


Figure 3. Use Case proposed

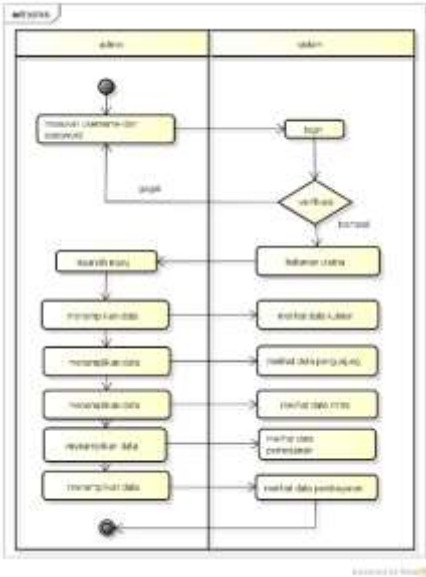


Figure 4. Activity Diagram Admin

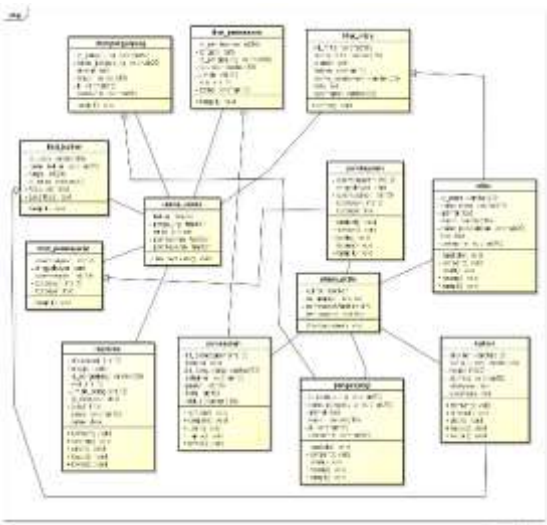


Figure 5. Class Diagram

3.3 Design

Design is the processing stage of the input, output, design of writing program code into the selected programming language, namely PHP and MySQL database and the tools used are Visual Studio Code.

3.4 Implementation

Implementation is a finished form in the form of the results of the system that has been built which is then tested to obtain appropriate results and determine the quality of the system built. If there are problems in the system, it must be immediately adjusted to the needs of management and users.

IV. RESULTS AND DISCUSSION

The Lampung Culinary Information System is one form of creativity in building the development of tourism progress in the province of Lampung. Because Culinary and Tourism are two things that can not be separated. Therefore, we need an information system that can provide information services for typical Lampung culinary as a form of promotion and increasing customer satisfaction in the progress of Lampung tourism.

This research has produced a typical Lampung culinary information system that allows the public to get information quickly, effectively and efficiently. In addition, there is some other information about culinary tourism locations, booking places, etc. So it can be ascertained that the system built can provide many benefits.

The following is a typical Lampung culinary information system that is built based on a website. Information related to the typical Lampung menu can be seen in the system directly as shown in Figure 4.1 catalog menu

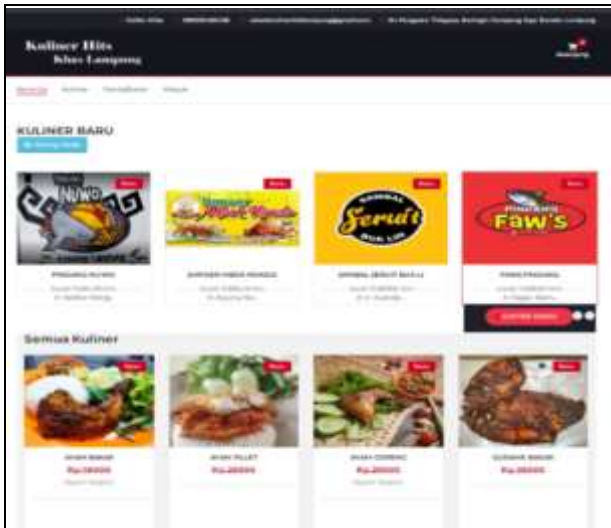


Figure 6. Menu Catalog

The next display is information on ordering features that are owned including adding, changing, deleting, and displaying which can be accessed by visitors and controlled directly by the admin. The display can be

seen in Figure 4.2 ordering



Figure 7. Ordering

The following is a display of the results of the Lampung culinary information system for new product features that can be ordered by Lampung culinary visitors, which can be seen in Figure 4.3 of the order menu.

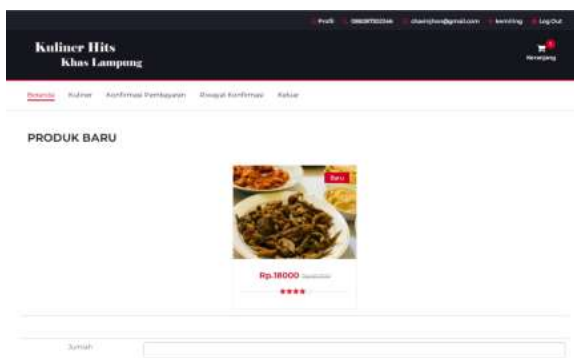


Figure 8. Order Menu

The display of the results of the Lampung culinary information system to confirm payment and find out the location of the typical Lampung culinary can be seen in Figure 4.4 Payment confirmation and Map

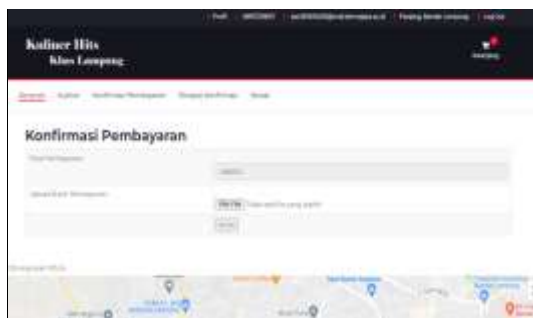


Figure 9. Payment and Map

Based on these results, the Lampung Typical Culinary Information System has helped tourists to get information about Lampung's culinary specialties.

V. CONCLUSION

In the implementation of this Lampung Typical Culinary Information System, it can be concluded as follows:

1. The implementation of a typical Lampung Culinary Information System can help improve and advance Lampung province tourism, because Tourism and Culinary are something that cannot be separated in improving the economy of the city of Bandar Lampung.
2. The Lampung Typical Culinary Information System can assist in promoting the province's excellence and creativity in terms of city-specific culinary delights as a tourist destination.
3. The implementation of the Culinary Information System can help the city's economy as well as culinary partners as a form of increasing the business development of culinary partners in Lampung.
4. The implementation of a typical Lampung Culinary Information System can provide benefits for tourists who come to Lampung, because it provides clear culinary information, both typical Lampung menus, culinary locations, and also ordering.

ACKNOWLEDGMENT

The authors would like to thank IIB Darmajaya for supporting and funding the writing of this journal. The Moreover, the author also thank the graduated students for supporting and providing the sample of the data collection.

REFERENCES

- [1] Auliya, A., & Mona, N. (2020). Culinary Creativity Development as a Power Element
- [2] 2013 Rosa & Salahuddin, "UML, Use Case Diagrams, Activity Diagrams, Class Diagrams," in Structured Software Engineering, 2013.
- [2] E. Kartini and P. Silitonga, "Web-Based Information System for Culinary Tourism in Medan City," *MEANS (Media Inf. Anal and Sist.*, vol. 2, no. 2, pp. 139–145, 2018.
- [3] I. gusti N. Suryantara, "Designing Applications with the Programmings Methodology." PT Elex Media Komputindo, Jakarta, 2017.
- [4] Hendrawan, E., Irianto, S.Y. and Fitria, F., 2021. MEASUREMENT OF ELECTRONIC LEARNING PERFORMANCE USING THE TECHNOLOGY ACCEPTANCE MODEL (TAM) METHOD AT THE VOCATIONAL SCHOOL OF PATRIA GADINGREJO. *Jurnal TAM (Technology Acceptance Model)*, 12(1), pp.48-58.
- [5] B. Raharjo, "Self-Taught CodeIgniter

- Framework,"*Bandung Informatics*, pp. 1-387, 2018.
- [6] M. Urbietta, F. Mahl, G. Rossi, and G. Bosetti, "A web-based model-driven platform for web augmentation," in *WEBIST 2019 - Proceedings of the 15th International Conference on Web Information Systems and Technologies*, 2019, pp. 477–486.
- [7] Februari, P. and Fitria, F., 2019. Audit Sistem Keamanan Informasi Menggunakan ISO 27001 pada SMKN 1 Pugung, Lampung: Information Security Audit. *POSITIF: Jurnal Sistem dan Teknologi Informasi*, 5(2), pp.97-102.
- [8] MySQL, *MySQL :: MySQL 8.0 Reference Manual*, 69836th ed. Japan: Oracle, 2018.
- [9] A. Subagja, "Understanding PHP," in *Building Web Applications with OOP Method*, K. Gramedia, Ed. Jakarta: PT Elex Media Komputindo, 2018, pp. 1–18.
- [10] Tinambunan, Melvitasari, and Sanriomi Sintaro. "Restfull Application in the Geographical Information System for Tourism Bandar Lampung City." *Journal of Informatics and Software Engineering* 2.3 (2021): 312-323.
- [11] Fitria, Y.A., 2019. Visualization of data on earthquake prone areas from the analysis of earthquake data vibrations. *Test Engineering and Management*, 81(11-12).
- [12] Wahid, AA (2020). Waterfall Method Analysis for Information System Development. *J. Information Sciences. and Manaj. STMIK*, no. November, 1-5.