

# 4<sup>th</sup> ICITB

## The Design Of Information Systems Person With Disabilities At The Department Of Social Welfare The Province Of Lampung

Bobby Bachry

Institut Informatika dan Bisnis Darmajaya  
E-mail: bobbachry@gmail.com

---

### ABSTRACT

*The departement of social welfare the province of Lampung is a government agency engaged in the field of social welfare, which has the objective to restore the condition or health of physical, mental and social so that it can survive in fair and good in the life of society. The department of social welfare the province of lampung is divided into : program development, development rehabilitation, development assistance and community development program development social. Currently social services do not yet have a good system in processing the data, the rehabilitation of persons with disabilities. The development of the information system of persons with disabilities by using the waterfall method, the stages of the stages are carried out to analyze a running system design and implementation. With the data information system of persons with disabilities is expected to provide accurate information regarding the number of persons with disabilities in the province of Lampung in the decision making.*

**Keywords:** *The Department Of Social Welfare, Disabilities, Waterfall, Information Systems*

---

### INTRODUCTION

The construction of social welfare sector are men who are a unity of effect as the development plans the government sample is taken at lampung province with less concern for make every effort to implement on the development of social welfare who in accordance with the legislation act no on the .22 years 1990 .The local office of social welfare sample is taken at lampung province with less concern for was a government institution that is moving in order of people with social welfare part in the bali meeting in indonesia which aims for reverse the captivity and restore the condition or physical fitness , mental

and social so that it can be were continuing live in an appropriate manner and good stood up in the paper the social life .The local office of social welfare sample is taken at lampung is located on the basuki rahmat no. 72 bandar lampung , meanwhile some of the types a service or guidance that there have been instances of the local office of social welfare sample is taken at lampung is divided into: program development in , to rip up a floor the restoration of existing , financial assistance for agricultural investment to rip up a floor , and bina the development of social .To rip up a floor let the deceiver deceive the large amounts of capital the restoration of existing consisting of: for rehabilitation and services of tuna sosial; for rehabilitation and services of to all boys and girls , be in the low teens , as many as families and continuing through old age till; for rehabilitation and services of relic of african barbarism. One of the tasks of to rip up a floor the rehabilitation of the large amounts of capital of people with disabilities .For the time being the restoration of existing of people with disabilities to better manage their crops of lodgers with less more three hundred and sixty seven men who can render will undergo rehabilitation .Of people with disabilities receive skill training in the form of , the quality of formal education , a course sew , a course electronic and for disabled person esp a defect physical provided in the form of the tools and provide easy access for disabled mentally handicapped diberikanya the quality of formal education mental so that they would have a good .As the amount of data a lot of to rip up a floor the restoration of the large amounts of capital there have been several obstacles that will emerge if of them in the process of for finding data task before him would require rehabilitation for a relatively long time 2 on sunday when to compile the report took ample of time 1 the moon .The payment is stalled because to the process the processing of the data has not using the system that computerized and a database and hard to be solved . General objectives of the study the human bone while designing data management information system of people with disabilities of people with social welfare from the local office of the lampung provincial .

## LITERATURE REVIEW

### Systems Development

According to jogiyanto h.m ( 2005 ) the development of a system ( system development can mean draw up a the new system to replace the old system in whole or only improves the existing system of .The cause of the system development :

1. The existence of the problems ( problems ) arising in the old system.

The problem that may constitute:

- a. Problem
- b. The growth of the organization be determined by the skill

2. *Opportunities*

### 3. Directivities

#### **The Principle**

According to jogiyanto h.m ( 2005 ) principles system development is as follows:

- a) A developed system for management  
The system which developed must be able to support all of the the things needed by the management of
- b) The system which developed need people who are trained
- c) The process of development should not be sorted system
- d) Organization or development team ca not be afraid to undo to invest in a project
- e) Documentation there must be to the system development

#### **Database**

According to they were originally licensed b .Harianto kristanto ( 1994: 03 ) a database is a collection of support for violent attacks had file-file the linkage between single file with a file another so as to form one building in the had informed islamabad of data for the purposes of a company a company that , intended in a language other than tertentu.bila there are of a file that is will not be able to be integrated of or is associated with of a file that is the three and contacting other means a sense of ownership such file is not groups of a dabse , he will take over as can form one database in order own .Istilah-istilah in a database:

- a) File
- b) Record
- c) field

#### **Disabled people**

According to a book data and information the office of social welfare lampung , of people with disabilities is: any man who had a physical and mental abnormality , as a result of inborn woe and other places that can interfere with or constituting through barriers and obstacles for him to act on a manner deserving day-to-day activities.

#### **Riview Jurnal**

From the research based on muslim and heri sismoro , the presence of web-based information system data pmks ( people with social and welfare problems ) yield on pelalawan social workers , information systems is expected to shorten the time in transfers and of data validation .The sight of this another information system also has feature which is other supporting profile , a picture gallery , the agenda , information and news

## RESEARCH METHOD

System Development Life Cycle (SDLC) Is methodology common to system development in many organization , hence or steps the development of information systems someone had an idea for a information systems and whatever needs to be done

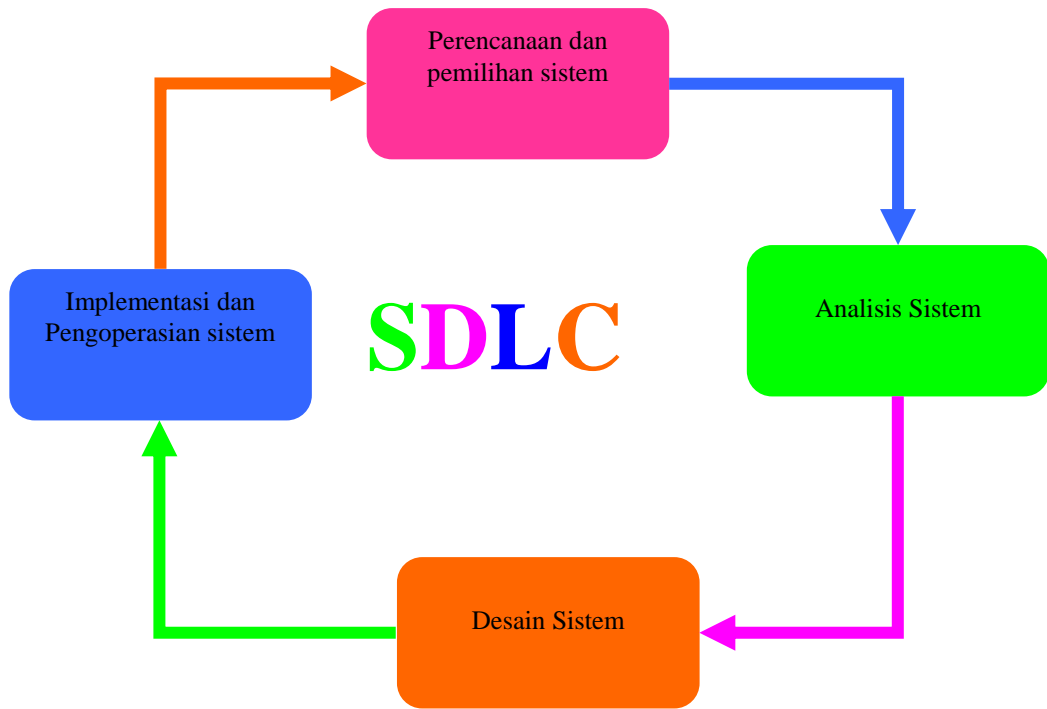


Figure 1. Cycle SDLC

## FINDINGS AND DISCUSSION

**The procedure of international cooperation of the rehabilitation service division of the subsystem operating of people with disabilities**

Is made of changes in the subsystem operating rehabilitation service division of the son of defect is the manufacture of hcp the restoration of existing , after the data put into a file their services with regard to the restoration of its results will be in the form of hcp the restoration of existing , the other hand the cards this out as evidence the restoration of existing services .Hcp the restoration of existing security system will be established copies of the 2 , the first page should be given to the upsk sheets of to two of them located in archive



**b. Output Disabled People Per Kecamatan**

**DINAS SOSIAL KOTA LAMPUNG**  
**Laporan Penyandang Cacat / Kecamatan**

Kecamatan :

No.ID	Nama PaCa	Alamat	Umur	L / P	Jenis Kecacatan	Pendidikan

Bandar Lampung.....  
Bag. Data dan Informasi

(            )

**Figure 5. Desain Output Disabled Per Kecamatan**

**c. Output Data Disabled People Per Kelurahan**

**DINAS SOSIAL KOTA LAMPUNG**  
**Laporan Penyandang Cacat / Kelurahan**

Kelurahan :

No.ID	Nama PaCa	Alamat	Umur	L / P	Jenis Kecacatan	Pendidikan

Bandar Lampung.....  
Bag. Data dan Informasi

(            )

**Figur 6. Rancangan Output Disabled Per Kelurahan**

#### d. Output Rehabilitation disabled

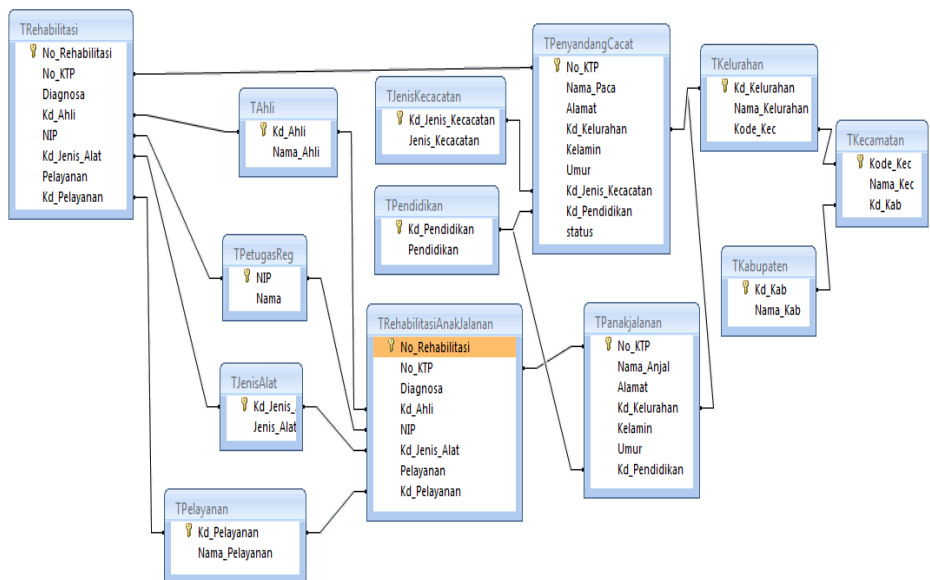
**DINAS SOSIAL KOTA BANDAR LAMPUNG**  
**LAPORAN REHABILITASI PENYANDANG CACAT**

No. Rehab.	No. ID	Nama PaCa	Alamat	Umur	L / P	Jenis Kecacatan	Diagnosa	Nama Pelayanan	Nama Ahli	NIP	Nama	Jenis Alat

Bandar.Lampung.....  
Bag. Data dan Informasi

**Figur 7. Rancangan Output Rehabilitation disabled**

### 3. Relasi Table



**Figure 7. Relasi Table**

## CONCLUSION

Has not yet been terintegrasi-nya the data required in subag rehabilitation and services to the office of dept of the lampung provincial welfare .It still needs time the result of a relatively long time to get , cultivate and make a report or a form of information data the restoration of which it is desired by a superior .An integrated information system for the restoration of existing data this has been designed to make it easier for the work of the precision routine of yanking daily hire workers and shaped ornaments that were on subag rehabilitation and study on public service delivery , in the form of information rehabilitation and study on public service delivery of people with disabilities which in this case results in the formulations of the laporan-laporan focus the utilization of the for a comprehensive approach and informative reading as the end result this application is reasonable enough.

## REFERENCES

- Arief, M. Rudyanto.2011.Pemrograman Web Dinamis Menggunakan PHP dan MySQL.Yogyakarta: ANDI.
- Jogiyanto H.M. 2005. Analisis dan Desain Sistem Informasi. Yogyakarta: Andi
- Kadir, A. 2003. Pengenalan Sistem Informasi. Yogyakarta: Andi
- Sutanta, E. 2003. Sistem Informasi Manajemen. Yogyakarta : Graha Ilmu